

BEFORE

- Quality Management Plan
- Safety Plan
- Data Acquisition Plan
- Data Processing
- Anticipated final deliverables

DURING

- Interim Progress Reports (long duration projects)
- Notification of unusual circumstances

AFTER

Final Project Report

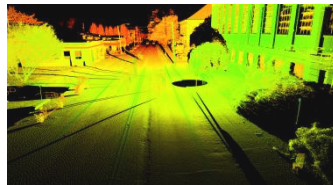
- Survey Narrative
 - Project name and location identifier
 - Survey date, time, weather conditions, limits and purpose
 - Project datum, epoch and units
 - System calibration report
 - Survey control points found, held and set (see Control Survey Report)
 - Personnel, equipment, and surveying methodology employed
 - Problems encountered, if any
 - Other supporting survey information such as GNSS observation logs
 - Dated signature and seal (if required) of the surveyor in charge

- Control Survey Report
 - Primary control held or established
 - Project control held or established
 - Local transformation points
 - Validation points
 - Adjustment report for control and validation points
 - Base station observation logs (occupation data, obstruction diagram, atmospheric conditions, etc.)
 - GNSS accuracy report with details on time, duration, and location of loss of signal lock
 - GNSS satellite visibility and PDOP reports
 - IMU accuracy report
 - Trajectory reports including locations of loss of signal lock exceeding a specified threshold (typically 60 seconds) and operating speeds during acquisition.
 - Validation
 - Point Density Map
- Data Processing Documentation
 - Trajectory analysis and QC
 - Adjustment report
 - Registration statistics
 - Model fitting statistics
 - Detailed Metadata files



Datasets

- Point Cloud
 - Geo-referenced
 - Classified
- Imagery
 - Videos
 - Still Images
 - System setup



- Modeled Data
 - DTM
 - CADD, BIM, or BRIM files
 - GIS database files
 - Other formats
- Survey control points (X,Y,Z,ID, standard deviations., residuals)
- Trajectory (e.g., shp or kmz)